



RAPID CONTROL SERVICE, INC.

Partners In Automation Since 1964

PNEUMATIC / ELECTRICAL / RESISTANCE WELDING

Phone: 616-538-1111

WATTS: 1-800-632-1857

Fax: 616-538-6847

Website: www.rapidcontrol.com

E-Mail: sales@rapidcontrol.com

SMC[®] ACTUATORS GUIDE



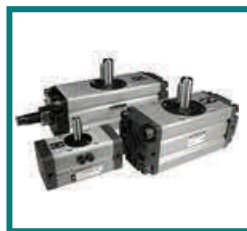
Grippers



Rotary Clamp



Power Clamp



Rotary Actuator

2479 28th Street - Grand Rapids, MI - 49519



RAPID CONTROL SERVICE, INC.

Partners In Automation Since 1964

PNEUMATIC / ELECTRICAL / RESISTANCE WELDING

Phone: 616-538-1111

WATTS: 1-800-632-1857

Fax: 616-538-6847

Website: www.rapidcontrol.com

E-Mail: sales@rapidcontrol.com



Rotary



MSQ/MSUB Rotary Table

CAD Available
www.smcuse.com

- Sizes: MSQ 10 20 30 50 MSUB 1 3 7 20
- Integrated Load Bearing And Rotary Actuator
- Simplified Alignment Of Load And Mounting
- MSQ: Rack And Pinion Type
- MSUB: Vane Type
- Auto Switch Capable



NCRBBW Rotary Actuator

CAD Available
www.smcuse.com

- Sizes: 10 15 20 30
- Optional Rotations: 90° 180° 270°
- Angle Adjustment Option
- Compact and Lightweight
- Ball Bearing Supported Shaft



NCRB Rotary Actuator

CAD Available
www.smcuse.com

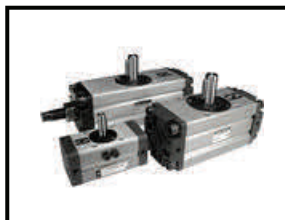
- Sizes 50 80 100
- Optional Rotations: 90° 180° 270°
- Compact Design
- Aluminum Die Cast Construction
- Single Vane



NCRQ Rotary Actuator

CAD Available
www.smcuse.com

- Sizes: 10 15
- Compact Double Rack Design
- Body Can Be Mounted As Flange
- Stainless Steel Shaft
- Rotation Adjustment Is Standard



NCRA1 Rotary Actuator

CAD Available
www.smcuse.com

- Sizes: 30 50 63 80 100
- Compact And Lightweight
- Single And Double Shaft
- Air Cushions Available On Both Ends
- Single Rack And Pinion



MRQ Rotary Cylinder

CAD Available
www.smcuse.com

- Sizes: 32 40
- Linear Movement Combined With A Rotary Actuator
- Adjustable Rotation Angle: 90° 180°
- Built In Air Cushions
- Auto Switch Capable



RAPID CONTROL SERVICE, INC.

Partners In Automation Since 1964

PNEUMATIC / ELECTRICAL / RESISTANCE WELDING

Phone: 616-538-1111

WATTS: 1-800-632-1857

Fax: 616-538-6847

Website: www.rapidcontrol.com

E-Mail: sales@rapidcontrol.com



Grippers



GRIPPERS
Parallel Or Angular
CAD Available
www.smcusa.com

- Bore Sizes: 6 10 16 20 25 32 40
- Standard Or High-Rigidity Models
- Wide Range Of Body Options
- 4 Type Of Finger Variations
- Various Mounting Options



MHZ2
Parallel Gripper
CAD Available
www.smcusa.com

- Bore Sizes: 10 16 20 25
- High Accuracy And Compact
- Wide Range Of Body Options
- Multiple Mounting Configurations
- High Magnetic Field Auto Switches



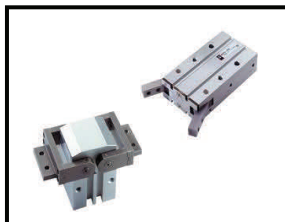
MHK2
Wedge Cam Gripper
CAD Available
www.smcusa.com

- Bore Sizes: 12 16 20 25
- Wedge Cam Actuation For Precision
- Dust Cover For Adverse Environments
- Compact And Lightweight
- Mounts From 3 Directions



MRHQ
Rotary Gripper
CAD Available
www.smcusa.com

- Bore Sizes: 10 16
- Ideal For Holding/Reversing Work
- Mounts From 5 Directions
- Simple Rotating Range Adjustment
- Compact And Lightweight



MHY2/MHW2
180* Angular Gripper
CAD Available
www.smcusa.com

- Bore Sizes: 10 16 20 25 32 40 50
- Compact Size And Lightweight
- MHY2: Cam Type
- MHW2: Rack And Pinion
- Auto Switch Capable



MHS
Gripper
CAD Available
www.smcusa.com

- Bore Sizes: 16 20 25 32 40 50 63 80 100 125
- Compact Size With Wedge Cam Construction
- Lightweight For End Of Arm Applications
- High Repeatability
- Parallel Opening/ Closing
- 2, 3, and 4 Finger
- Auto Switch Capable



RAPID CONTROL SERVICE, INC.

Partners In Automation Since 1964

PNEUMATIC / ELECTRICAL / RESISTANCE WELDING



Phone: 616-538-1111

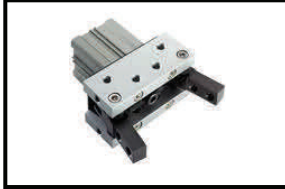
WATTS: 1-800-632-1857

Fax: 616-538-6847

Website: www.rapidcontrol.com

E-Mail: sales@rapidcontrol.com

Specialty



MHT2
Toggle Gripper
CAD Available
www.smcusa.com

- Bore Sizes: 32 40 50 63
- Reliable Gripping Support
- Toggle Mechanism Holds, Even When Air Pressure drops
- Threaded Mounting Holes
- Treated To Resist Corrosion



MIS
Escapement
CAD Available
www.smcusa.com

- Bore Sizes: 8 12 20 25 35
- 1 Finger Type
- Strokes: 10mm 20mm 30mm 50mm
- Supply Ports On Both Sides
- Auto Switch Capable



RSQ
Stopper Cylinder
CAD Available
www.smcusa.com

- Bore Sizes: 20 32 40 50
- For Conveyor Stopping Applications
- 4 Different Rod End Configurations
- Through Hole Or Tapped End Mounting
- Fixed Mounting Height



Part Locating
Cylinder
Special

- Bore Sizes: 32 50
- Part Location Applications
- Through Hole Or Tapped Hole Mounting
- Auto Switch Capable



MK2
Rotary Clamp Cylinder
Stock Rapid Control

- Bore Sizes: 20 32 50 63
- Compact Design
- Strong Clamping Force
- Left Or right Rotation
- Through Hole Mounting



CKZ2N
Power Clamp Cylinder
Stock Rapid Control

- Bore Sizes: 50 63 80
- Various Arm Opening Angles
- Different Arm Mounting Positions
- Auto Switch Capable

2479 28th Street - Grand Rapids, MI - 49519