



RAPID CONTROL SERVICE, INC.

Partners In Automation Since 1964

PNEUMATIC / ELECTRICAL / RESISTANCE WELDING

Phone: 616-538-1111

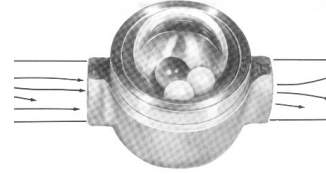
WATTS: 1-800-632-1857

Fax: 616-538-6847

Website: www.rapidcontrol.com

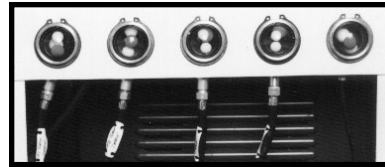
E-Mail: sales@rapidcontrol.com

Visual Flow Indicator

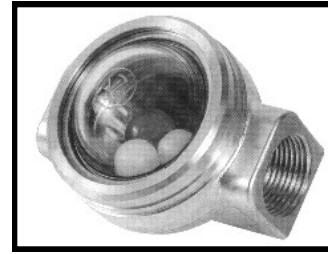


to Monitor

FLOW - COLOR - RATE



PANEL MOUNTING



Rapid Control Service Flow Indicator is a high quality, inexpensive device that permits visual detection of liquid flowing through a line.

Key Features

- Low cost
- Sizes 1/4", 3/8" & 1/2"
- Solid brass body
- Lexan liner and dome
- Chemically resistant seal

- Self cleaning ball action
- Compact size
- Easy installation
- Quick delivery

Applications

- Welding machines
- Injection molding machines
- Tool machines
- Paper industry process lines
- Paint lines

Part Number	Port Size
SI-3048-1/4	1/4"
SI-3049-3/8	3/8"
SI-3050-1/2	1/2"

2479 28th Street - Grand Rapids, MI - 49519



RAPID CONTROL SERVICE, INC.

Partners In Automation Since 1964

PNEUMATIC / ELECTRICAL / RESISTANCE WELDING

Phone: 616-538-1111

WATTS: 1-800-632-1857

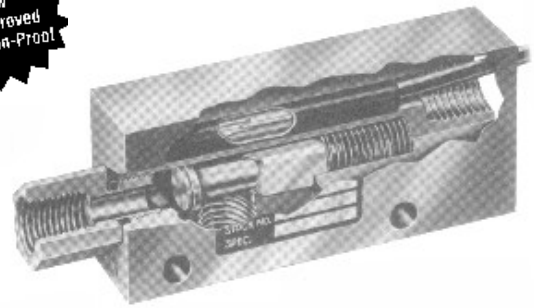
Fax: 616-538-6847

Website: www.rapidcontrol.com

E-Mail: sales@rapidcontrol.com

Flow Sensors

Rapid Control Flow Sensors provide accurate detection of insufficient flow rate for resistance welding machines. This switch will protect against loss of fluid flow and assure proper coolant



Specifications

- **Housing** Brass
- **Piston** Polysulfone
- **Spring** 316 Stainless steel
- **O-Ring** Viton
- **Pressure Rating**
 - Max 1000 PSIG
 - Proof 2500 PSIG
 - Burst 5000 PSIG
- **Temperature** -20F to +225F
- **Repeatability** 1% Deviation
- **Set Point Accuracy** +/- 10%
- **Set Point Differential** 15%
- **Switch** SPDT, 20 VA
- **Inlet/Outlet Ports** 1/4" NPT
- **Electrical Termination** No. 18 AWG, 24"L., Lead Wires

Part Number: 26916

2479 28th Street - Grand Rapids, MI - 49519